

Online MSc Global Business Management with Logistics & Supply Chain Management

Set your business career on the right track by learning to manage supply chains from the ground up.



Table of contents

Programme need-to-knows	3
Programme excellence	4
Programme advantages	5
Programme outcomes	6
Programme curriculum	7
Programme modules	8
Programme entry requirements	11
Programme leaders	12
Programme support	13

Your programme need-to-knows



Start date

January, March, June, and September



Study mode

Online



Duration

1 year full-time, 2 years part-time



Credits

180

Shape your future at a world-class institution



**London's #1 modern
university**

(Times Good University Guide, 2022)



**Top 10 for postgraduate
satisfaction**

(Postgraduate Taught Experience Survey, 2023)



**Silver in 2023 Teaching
Excellence Framework**

(Teaching Excellence Framework, 2023)



**Joint number 1 modern
university in the UK for research**

(Research Excellence Framework, 2021)



**Ranked in the top 15% of young
universities worldwide**

(Times Higher Education Young University
Rankings, 2024)



The advantage of Roehampton Online

Learn on your terms.

Advance your career from anywhere with our cutting-edge virtual learning platform. Access course materials and resources anytime, from any device, at your convenience.

Support when it matters.

Count on our dedicated support teams to provide quick answers and ensure you feel confident throughout your studies.

Pave your way forward.

Choose a learning path that reflects your career objectives, supported by the tools and resources to help you succeed.

Set yourself apart in the world of business

Gain a specialised edge.

Master global supply chain management and business strategies to drive innovation and leadership in the evolving global marketplace.

Learn from industry experts.

Hear from those directly shaping the industry and gain real-world experience in leadership before you graduate.

Turn theory into action.

Go beyond textbook must-haves and immerse yourself in real-world scenarios and global challenges.

Build meaningful connections.

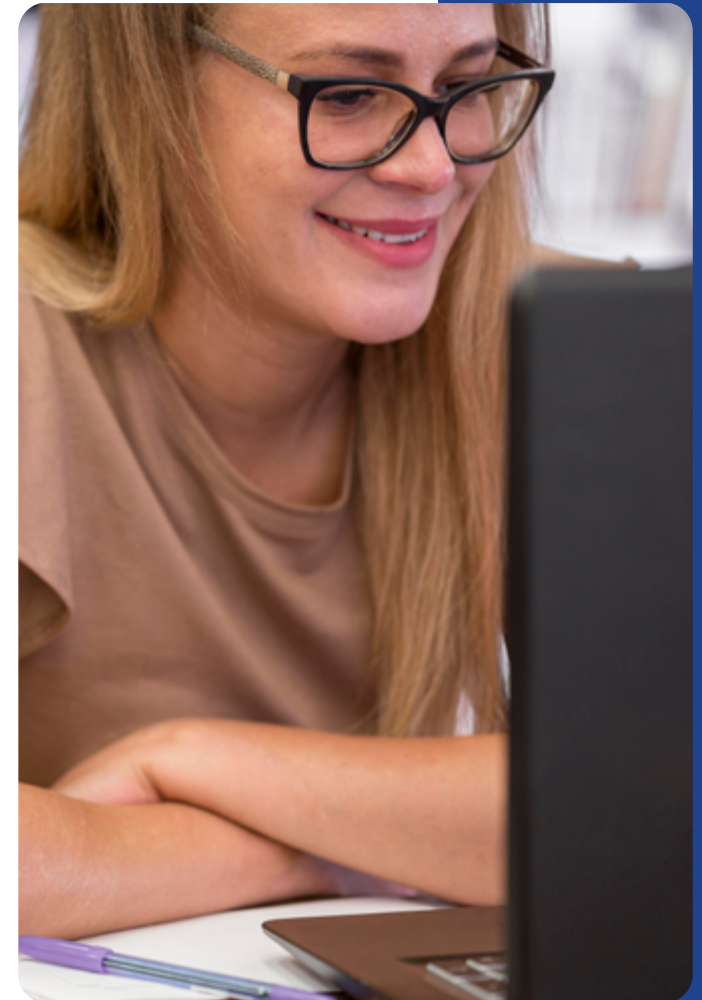
Expand your professional network by engaging with a diverse community of ambitious and like-minded peers.

Expand your global perspective.

Enhance your self-development through our Global Leadership Programme, featuring live guest lectures, online workshops, and industry connections.

Future-proof your career.

Stay ahead of emerging trends and seize new opportunities with expert guidance and the latest sector insights.



Our comprehensive curriculum

Discover the key to global success with unmatched logistics and supply chain expertise.

In an interconnected world, the ability to manage and optimise supply chains is critical to business success – and advancing your career. This degree equips you with the expertise to navigate the complexities of global business operations to enhance performance across logistics and supply chains. With a strong emphasis on sustainability, you'll explore how sustainable practices shape international business policies, stakeholder relationships, and strategic decision-making.

Through practical modules and real-world case studies, you'll learn what it means to design resilient, sustainable supply chains, solve complex challenges, and lead with confidence in the fast-evolving global marketplace. You'll finish ready to step into leadership roles, driving innovation and shaping the future of global logistics and supply chain management you'll be equipped to tackle global challenges, lead across borders, and thrive in an interconnected world.

You'll walk away ready to:

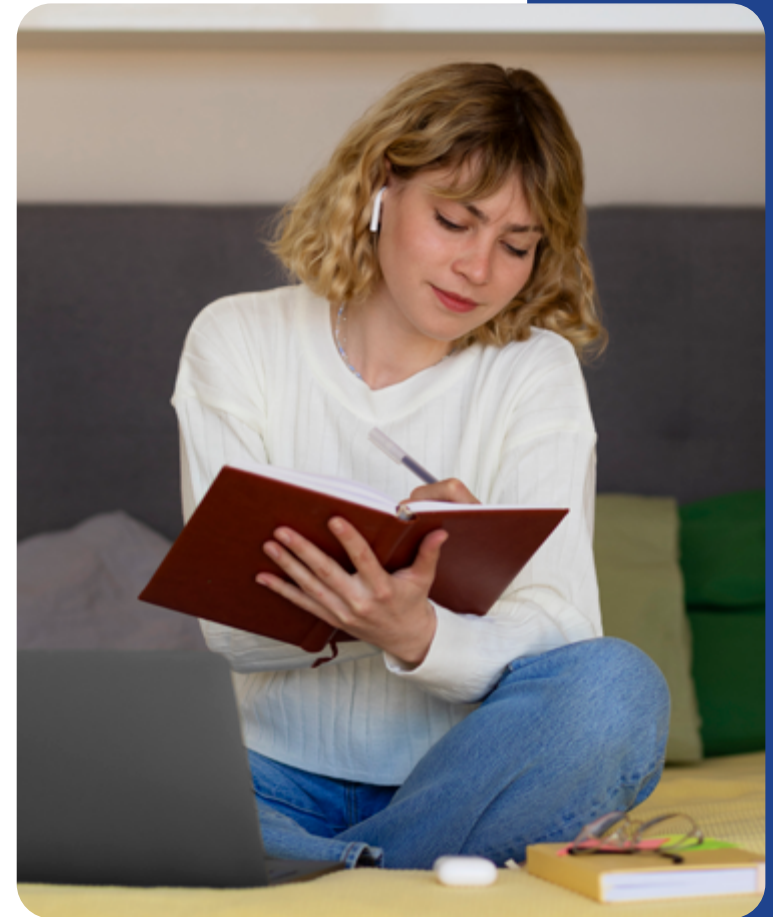
- Analyse complex situations, develop strategic approaches, and communicate effectively to address future management and leadership challenges.
- Implement change management principles and lead as an effective change agent in international organisations.
- Apply the latest knowledge and skills in international logistics and supply chain management to real-world scenarios.
- Conduct research using advanced techniques to solve global business and management challenges.
- Boost your employability through industry connections, career networks, and hands-on business experience.

Engaging modules at your convenience

With Roehampton Online, learning is possible anywhere, anytime, and in any way. In this programme, you'll work through each forward-looking, research-driven module at your own pace, allowing you to balance your studies and personal commitments with ease.

You'll engage in a blend of hands-on learning and innovative assessments, applied projects, and a practical dissertation to challenge your analytical thinking and problem-solving skills to prepare you for the real world.

- Global Strategic Management
- Leadership and Change Management
- Business Research Methods
- Supply Chain Strategy and Processes
- Managing International Trade
- Digital Logistics and Supply Chain Management
- Global Service Operations, Logistics and Supply Chain Management
- Applied Research or Consultancy Project (Dissertation)



Global Strategic Management

Build the expertise to craft and implement corporate strategies on a global scale, integrating sustainability, data-driven decision-making, and stakeholder relations to drive business success.

Leadership and Change Management

Learn how to lead organisations through change, mastering the strategies to manage cultural differences, employee engagement, and leadership effectiveness in an evolving business environment.

Business Research Methods

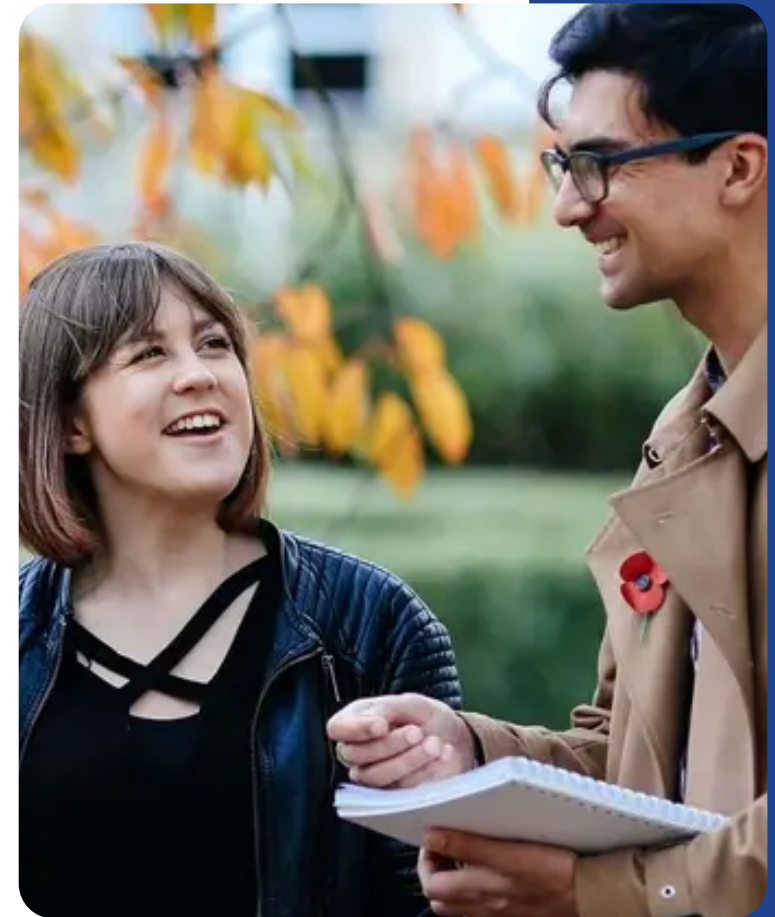
Master the research techniques needed for your capstone project, from design and data analysis to ethical considerations, while developing the critical skills necessary to address real-world business challenges.

Supply Chain Strategy and Processes

Gain a comprehensive understanding of global supply chain management, strategies, and processes. Focus on integrating materials, services, and information across international systems, with insights from global case studies.

Managing International Trade

Understand how international trade impacts global businesses and evaluate strategic decisions in varying trade contexts. Analyse political, financial, and legal aspects of international trade.



Digital Logistics and Supply Chain Management

Learn how emerging digital technologies like AI, blockchain, and big data are transforming global logistics and supply chain management. Gain practical knowledge in supply chain analytics, e-procurement, and Industry 4.0 practices.

Global Service Operations, Logistics and Supply Chain Management

Examine service industries' operations and supply chain management, focusing on improvements and innovation in sectors like retail, finance, and consultancy. Understand how global cooperation impacts service management in both developed and developing countries.

Applied Research or Consultancy Project (Dissertation)

Tackle a real-world business challenge by critically analysing an identified problem and delivering a theory-based, actionable solution. This project allows you to apply your knowledge and skills to make a meaningful impact.



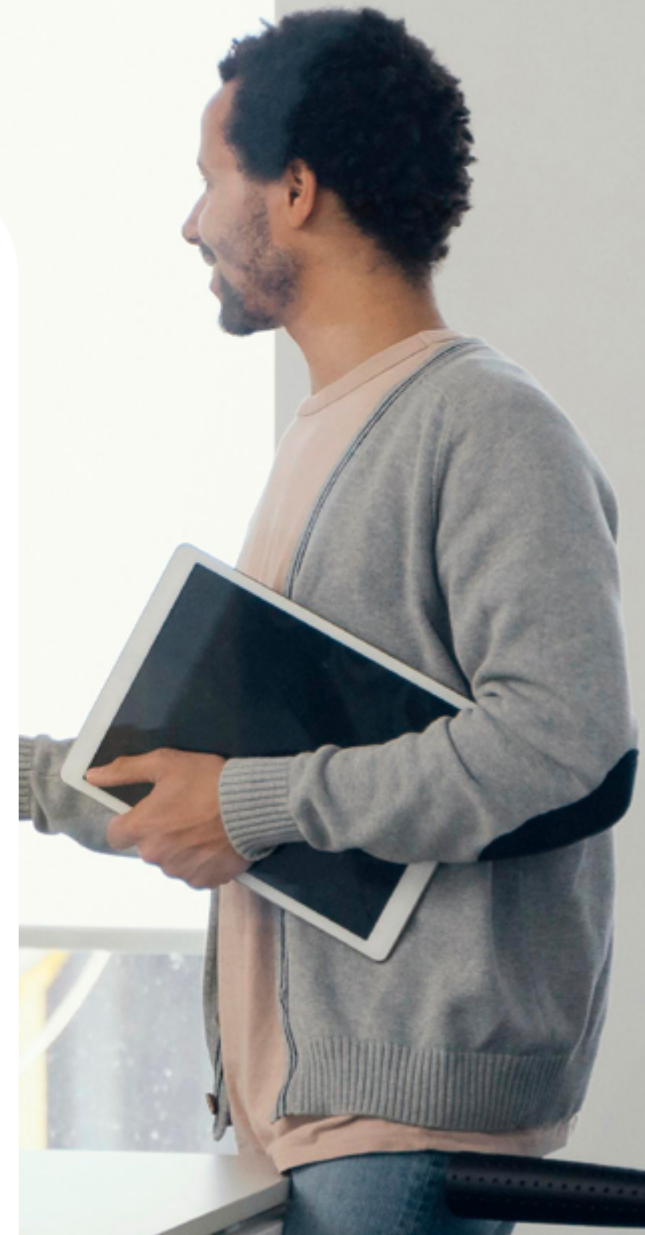
Entry requirements

Higher education requirements

This programme equips you with the strategic, analytical, and practical skills needed to thrive in global settings and manage complex supply chains. To be eligible, you should hold a second-class honours degree, in any discipline, or an equivalent business-related qualification. However, the University of Roehampton encourages non-graduates with appropriate professional qualifications and those with third-class honours degrees to apply.

English language requirements

This programme is taught in English. Non-native English speakers are required to demonstrate an English-language proficiency equivalent to IELTS 6.5 overall, with no component below 5.5, or TOEFL 600. If your IELTS score is 6.0, you may be eligible to take Roehampton's online pre-sessional English course to help prepare for your studies.



Your programme leaders

Dr Alison Watson



Professor Alison Watson is a senior academic leader specialising in leadership, sustainable development and accreditation. Formerly a Head of School at Arden University she oversaw student success and outcomes for 12,000+ students and delivered a globally recognised MBA redesign. A Principal Fellow of AdvanceHE, Chartered Manager (CMI) and Chartered Marketer (CIM), her research covers marketisation of HE, segmentation, student recruitment and e-learning, with current work on responsible leadership. She holds an MBA (Leicester) and a PhD (Teesside).

Dr. Maria Argyropoulou brings extensive academic and managerial experience to the Roehampton campus. Over the past decade, she has focused her research on entrepreneurial economics and organisational studies. Her expertise spans business development, management, innovation, leadership, information technology, strategic management, and marketing management.

Dr Maria Argyropoulou





Support from day one

Online learning doesn't mean you have to navigate your educational and professional journey alone. We're here to help with a range of our student support services:

Financial support

We're committed to helping you invest in your academic journey without overwhelming your finances, offering financial support options to accommodate your needs.

Technical support

To ensure you receive a seamless online learning experience, our on-demand technical support team will be there to answer any technology-related issues or questions you have.

Admissions support

Our admissions team is here to assist you at every step of the enrolment process. They're happy to answer any queries you have throughout your online journey.

Study support

We offer extensive academic resources and study support services to enhance your learning and success, all available from day one.

Take your future further

At Roehampton, we recognise that acquiring the right skills is essential to securing your dream career. That's why employability is central to all our online degree programmes.

Beyond the valuable knowledge gained through our modules, we offer a range of career services to further boost your chances of achieving your professional goals.

Here are just a few of the resources available to you as an online postgraduate student at Roehampton:

CareerLink: Our online career services tool offers CV builder support, interactive mock job interviews, volunteering and jobs directories, skills courses, and more.

Handshake: Roehampton's career services app of choice connects you with top employers and allows you to discover employment opportunities.

Career advisors: Set up an appointment with one of our career advisors to get advice on career planning, job applications, and interviews.

On-demand webinars: Hear from experts and gain essential insights to help you make informed decisions about your career and academic future.





University of
Roehampton
London

Start your
online
postgraduate
journey with
Roehampton

START MY APPLICATION

You can reach us by:
Phone +44 20375 04000
Email study@onlinestudy.roehampton.ac.uk

